

For each protein module that you have access to, the report includes several items/data series by default such as production data and the value of the Cutouts. You can add more items/data series in the **EMEAT** app (web or mobile) Personalization section.

EXPORT DATA



Beef Exports from the U.S.

Fresh, Chilled, or Frozen Muscle Cuts of Beef

Data in Thousands of pounds (Klbs)

Country	Wk End 12 Dec	Pr Wk	Pr Yr	Change		Change in %	
				Pr Wk	Pr Yr	Pr Wk	Pr Yr
KOREA, REPUBLIC OF	9,797	9,894	10,040	-97.0	-243	-1.0 %	-2.5 %
JAPAN	6,967	6,316	8,446	650	-1,479	9.3 %	-21.2 %
CHINA, PEOPLES REPUBLIC OF	6,122	4,901	5,011	1,221	1,111	19.9 %	18.1 %
TAIWAN	3,358	2,945	2,013	412	1,345	12.3 %	40.1 %
MEXICO	3,056	4,061	4,720	-1,005	-1,664	-32.9 %	-54.5 %
Other Countries	6,546	5,613	7,778	933	-1,232	14.2 %	-18.8 %
Total:	35,845	33,731	38,008	2,114	-2,163	5.9 %	-6.0 %



Pork Exports from the U.S.

Fresh, Chilled, or Frozen Muscle Cuts of Pork

Data in Thousands of pounds (Klbs)

Country	Wk End 12 Dec	Pr Wk	Pr Yr	Change		Change in %	
				Pr Wk	Pr Yr	Pr Wk	Pr Yr
MEXICO	28,186	32,313	27,536	-4,127	650	-14.6 %	2.3 %
JAPAN	8,316	8,084	8,675	231	-359	2.8 %	-4.3 %
KOREA, REPUBLIC OF	8,175	8,514	11,396	-340	-3,221	-4.2 %	-39.4 %
CHINA, PEOPLES REPUBLIC OF	6,929	6,848	7,304	81.6	-375	1.2 %	-5.4 %
COLOMBIA	4,341	3,115	3,680	1,226	661	28.2 %	15.2 %
Other Countries	13,655	15,631	16,535	-1,975	-2,879	-14.5 %	-21.1 %
Total:	69,602	74,505	75,125	-4,903	-5,523	-7.0 %	-7.9 %

contact@emeat.io.

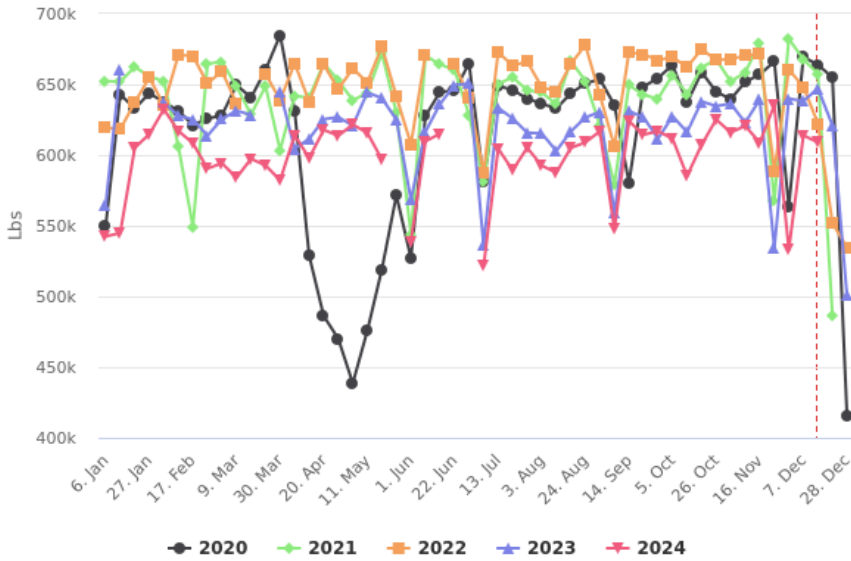
Copyright © 2020, EMEAT. All rights reserved

For each protein module that you have access to, the report includes several items/data series by default such as production data and the value of the Cutouts. You can add more items/data series in the EMEAT app (web or mobile) Personalization section.



MEAT PRODUCTION UNDER FEDERAL INSPECTION

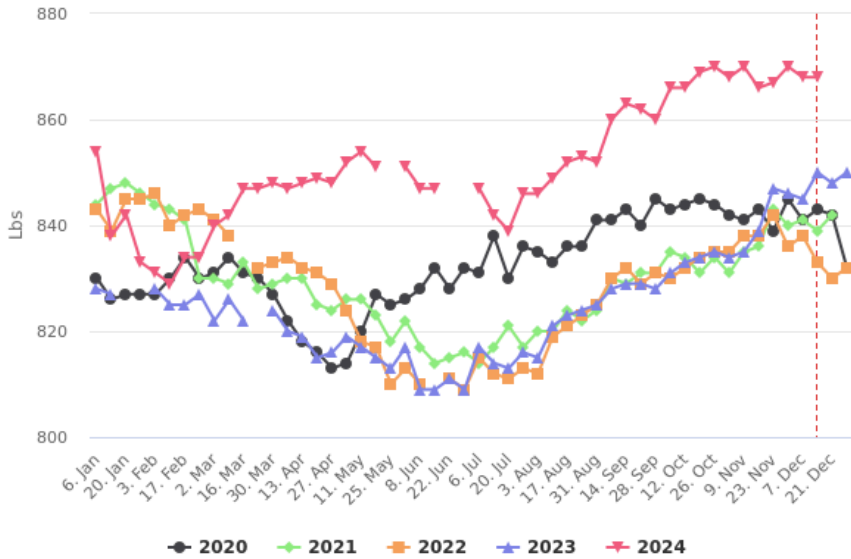
Livestock Slaughter > Actual + Estimated



Head

Years	23 Nov	30 Nov	07 Dec	14 Dec
2024	635K	533K	614K	609K
2023	534K	640K	638K	647K
2022	589K	660K	648K	622K
2021	568K	682K	668K	658K
2020	666K	564K	669K	664K
Avg Past 3 Years	589K	637K	656K	648K

Average Weights - Dressed > Actual + Estimated

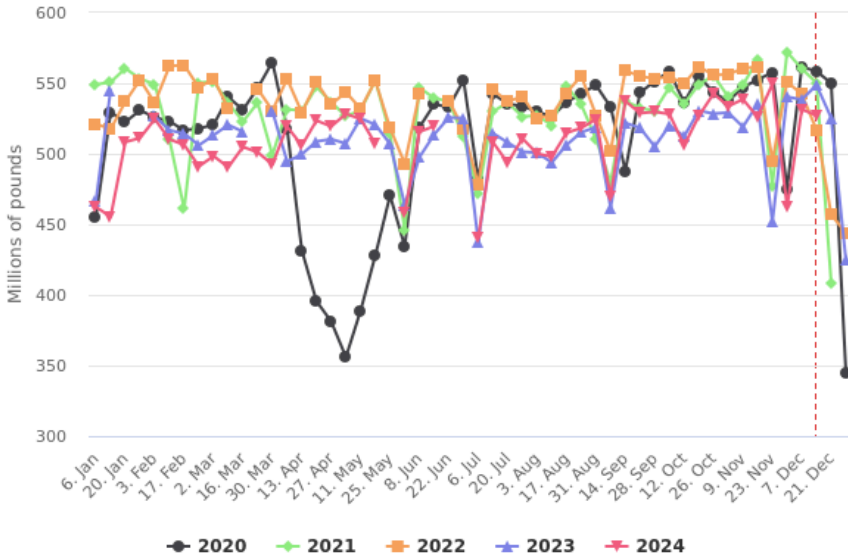


Data in Lbs

Years	23 Nov	30 Nov	07 Dec	14 Dec
2024	867	870	868	868
2023	847	846	845	850
2022	842	836	838	833
2021	843	840	841	839
2020	839	845	841	843
Avg Past 3 Years	843	842	841	841

For each protein module that you have access to, the report includes several items/data series by default such as production data and the value of the Cutouts. You can add more items/data series in the **EMEAT** app (web or mobile) Personalization section.

Meat Production > Actual + Estimated



Data in Millions of Pounds

Years	23 Nov	30 Nov	07 Dec	14 Dec
2024	550	463	532	527
2023	452	540	538	549
2022	495	551	542	517
2021	477	572	560	550
2020	558	476	562	559
Avg Past 3 Years	495	535	551	544

THE EASY ANALYTICS SUITE

- ✓ Everything included in the Free Market Data Suite
- ✓ 6 years of historical data
- ✓ Mexican Prices in the U.S.
- ✓ Import/Export Data
- ✓ Download the data in Excel format

YOUR GATEWAY TO EFFORTLESS N.A. MEAT INDUSTRY DATA. DON'T MISS OUT ON A SEAMLESS, CUSTOMIZABLE, AND FAST ANALYTICS EXPERIENCE!

contact@emeat.io.

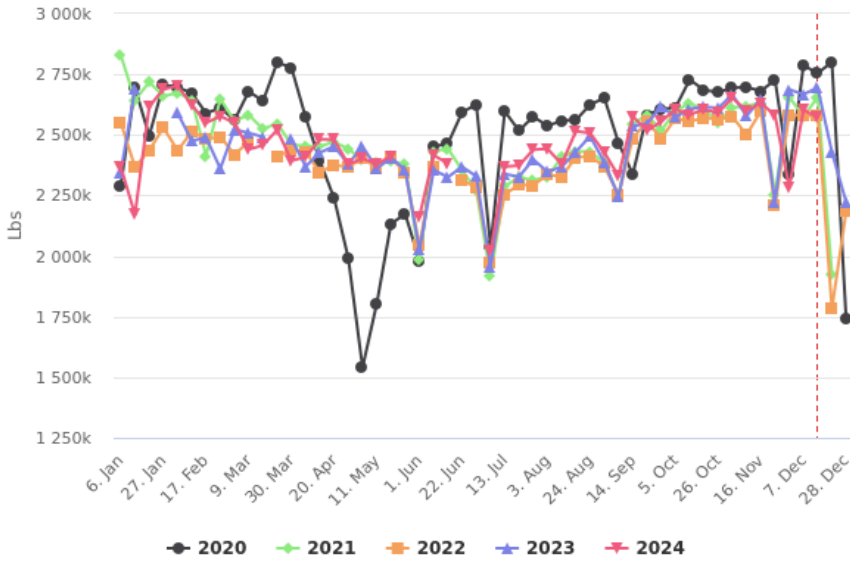
Copyright © 2020, EMEAT. All rights reserved

For each protein module that you have access to, the report includes several items/data series by default such as production data and the value of the Cutouts. You can add more items/data series in the EMEAT app (web or mobile) Personalization section.



MEAT PRODUCTION UNDER FEDERAL INSPECTION

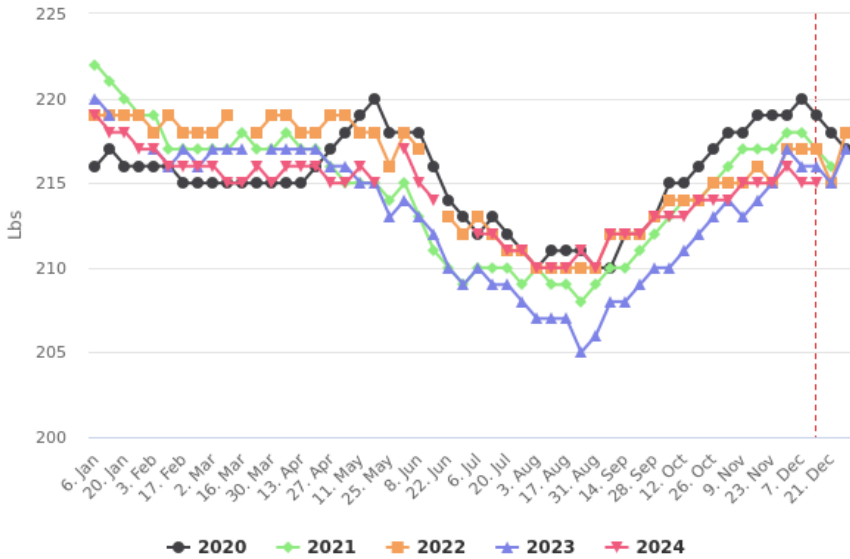
Livestock Slaughter > Actual + Estimated



Head

Years	23 Nov	30 Nov	07 Dec	14 Dec
2024	2,580K	2,284K	2,602K	2,573K
2023	2,221K	2,687K	2,668K	2,695K
2022	2,210K	2,583K	2,579K	2,580K
2021	2,255K	2,656K	2,576K	2,655K
2020	2,727K	2,340K	2,786K	2,755K
Avg Past 3 Years	2,353K	2,567K	2,652K	2,671K

Average Weights - Dressed > Actual + Estimated

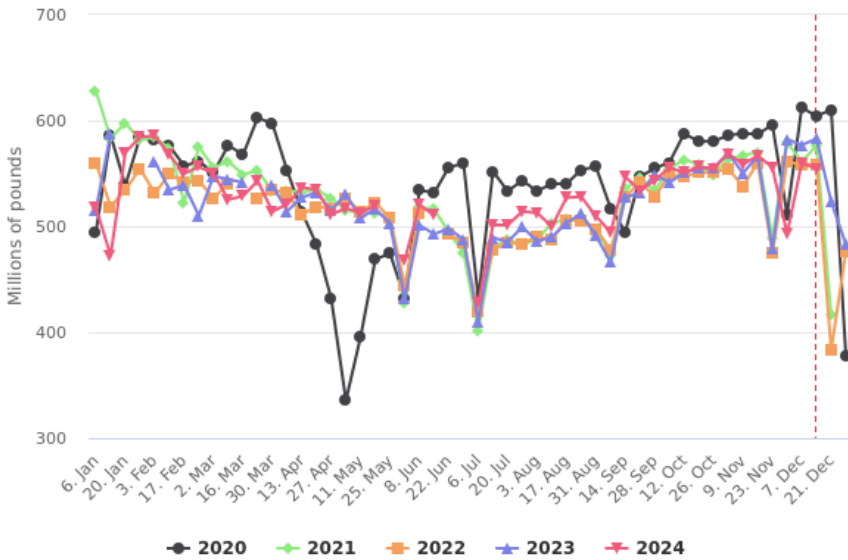


Data in Lbs

Years	23 Nov	30 Nov	07 Dec	14 Dec
2024	215	216	215	215
2023	215	217	216	216
2022	215	217	217	217
2021	217	218	218	217
2020	219	219	220	219
Avg Past 3 Years	217	218	218	217

For each protein module that you have access to, the report includes several items/data series by default such as production data and the value of the Cutouts. You can add more items/data series in the **EMEAT** app (web or mobile) Personalization section.

Meat Production > Actual + Estimated



Data in Millions of Pounds

Years	23 Nov	30 Nov	07 Dec	14 Dec
2024	556	493	560	555
2023	479	582	577	583
2022	475	561	559	559
2021	489	579	561	576
2020	596	511	612	604
Avg Past 3 Years	510	559	577	580

THE EASY ANALYTICS SUITE

- ✓ Everything included in the Free Market Data Suite
- ✓ 6 years of historical data
- ✓ Mexican Prices in the U.S.
- ✓ Import/Export Data
- ✓ Download the data in Excel format

YOUR GATEWAY TO EFFORTLESS N.A. MEAT INDUSTRY DATA. DON'T MISS OUT ON A SEAMLESS, CUSTOMIZABLE, AND FAST ANALYTICS EXPERIENCE!

contact@emeat.io.

Copyright © 2020, EMEAT. All rights reserved

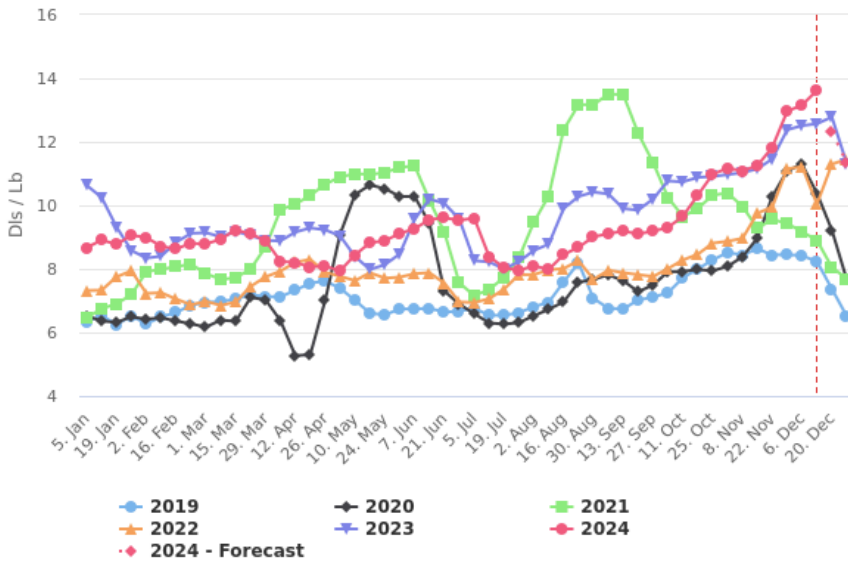
For each protein module that you have access to, the report includes several items/data series by default such as production data and the value of the Cutouts. You can add more items/data series in the EMEAT app (web or mobile) Personalization section.



PRICES OF MEAT CUTS / SUB-PRIMALS

109E 1, Ribeye, lip-on, bn-in > Choice

Prices of boxed beef > Negotiated Sales 0-21 Days > Rib

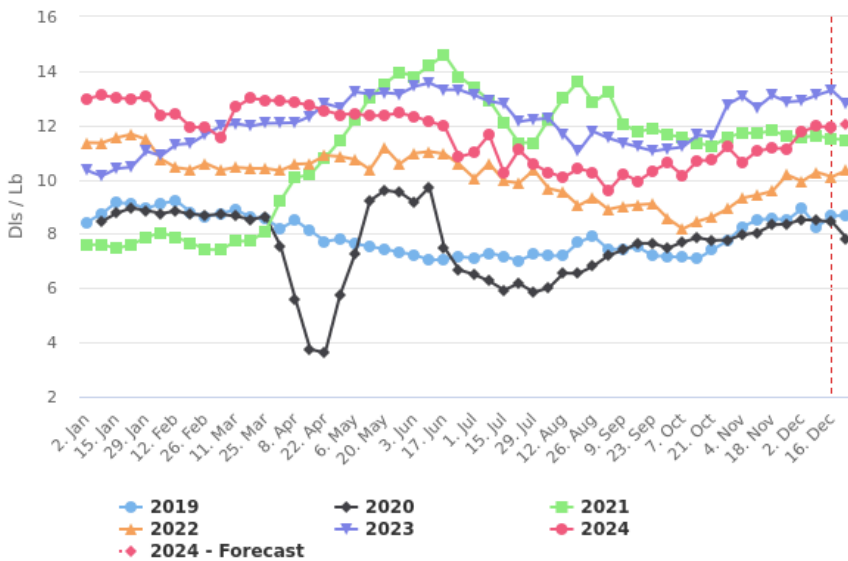


Data in USD/Lb

Years	22 Nov	29 Nov	06 Dec	13 Dec
2024	\$11.8	\$13.0	\$13.2	\$13.6
2023	\$11.5	\$12.4	\$12.5	\$12.6
2022	\$9.95	\$11.2	\$11.2	\$10.0
2021	\$9.56	\$9.43	\$9.17	\$8.90
2020	\$10.3	\$11.1	\$11.3	\$10.4
2019	\$8.44	\$8.45	\$8.42	\$8.23
Avg Past 3 Years	\$9.94	\$10.5	\$10.5	\$10.0

189A 4, Tndrloin, trmd, heavy > Ungraded

Prices of boxed beef > Negotiated Sales 0-21 Days > Loin



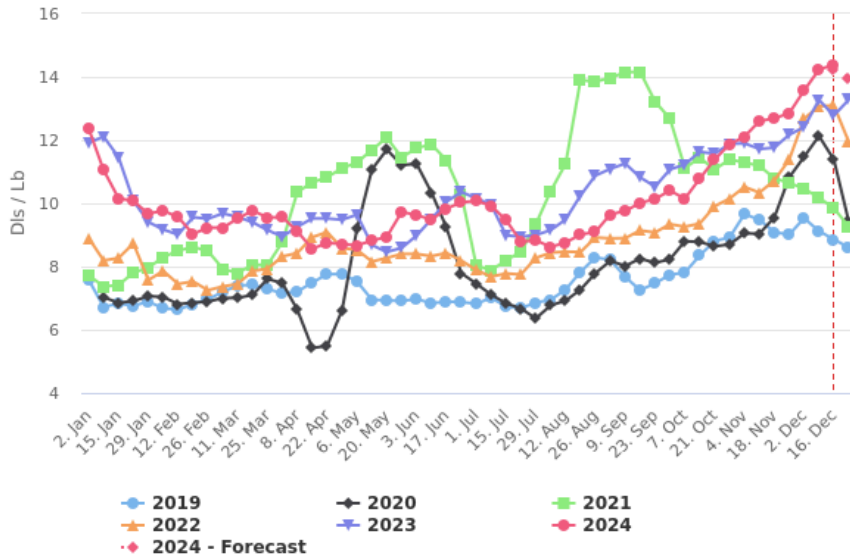
Data in USD/Lb

Years	25 Nov	02 Dec	09 Dec	16 Dec
2024	\$11.1	\$11.8	\$12.0	\$11.9
2023	\$12.9	\$12.9	\$13.1	\$13.3
2022	\$10.2	\$9.94	\$10.3	\$10.1
2021	\$11.6	\$11.6	\$11.6	\$11.5
2020	\$8.36	\$8.53	\$8.49	\$8.45
2019	\$8.50	\$8.93	\$8.26	\$8.65
Avg Past 3 Years	\$10.3	\$10.4	\$10.4	\$10.4

For each protein module that you have access to, the report includes several items/data series by default such as production data and the value of the Cutouts. You can add more items/data series in the **EMEAT** app (web or mobile) Personalization section.

109E 1, Ribeye, lip-on, bn-in > Choice 2/3

Prices of boxed beef > Negotiated Sales 0-21 Days > Rib

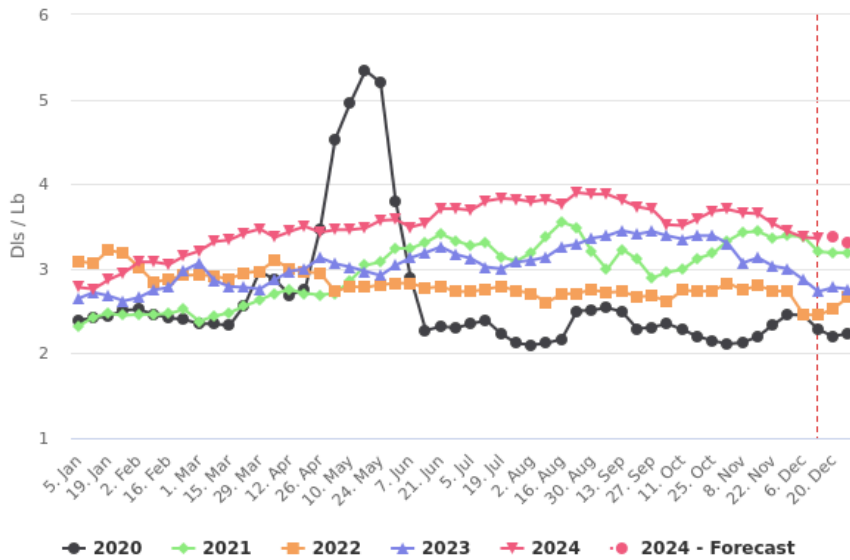


Data in USD/Lb

Years	25 Nov	02 Dec	09 Dec	16 Dec
2024	\$12.9	\$13.6	\$14.2	\$14.4
2023	\$12.2	\$12.4	\$13.3	\$12.8
2022	\$11.4	\$12.7	\$13.1	\$13.1
2021	\$10.6	\$10.5	\$10.2	\$9.84
2020	\$10.8	\$11.5	\$12.1	\$11.4
2019	\$9.01	\$9.53	\$9.12	\$8.86
Avg Past 3 Years	\$10.8	\$11.3	\$11.6	\$11.2

Chuck > 116B, Chuck tender

Prices of boxed cow beef > Negotiated Sales 0-21 Days



Data in USD/Lb

Years	22 Nov	29 Nov	06 Dec	13 Dec
2024	\$3.53	\$3.44	\$3.37	\$3.36
2023	\$3.03	\$3.00	\$2.87	\$2.73
2022	\$2.74	\$2.73	\$2.46	\$2.45
2021	\$3.36	\$3.39	\$3.38	\$3.20
2020	\$2.34	\$2.46	\$2.45	\$2.28
Avg Past 3 Years	\$2.87	\$2.89	\$2.79	\$2.67

THE EASY ANALYTICS SUITE

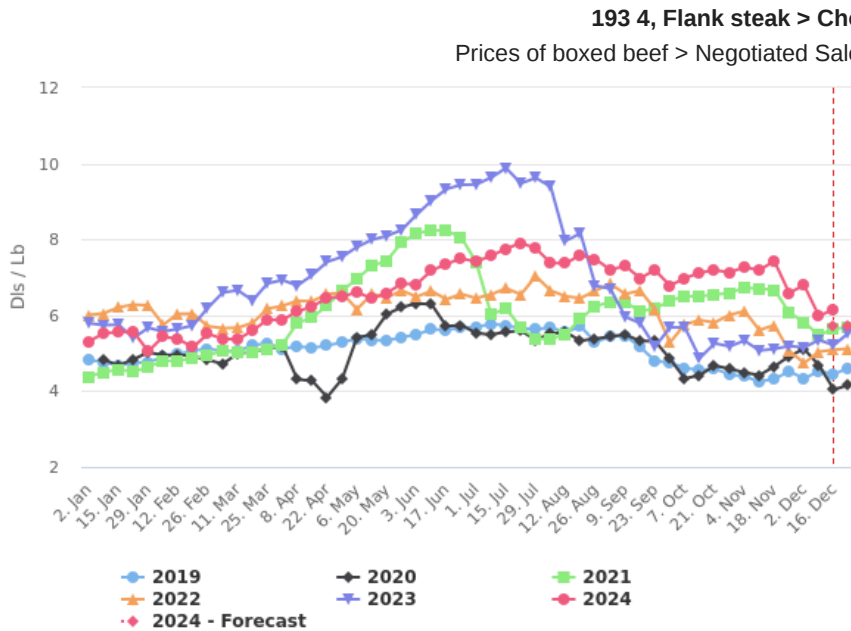
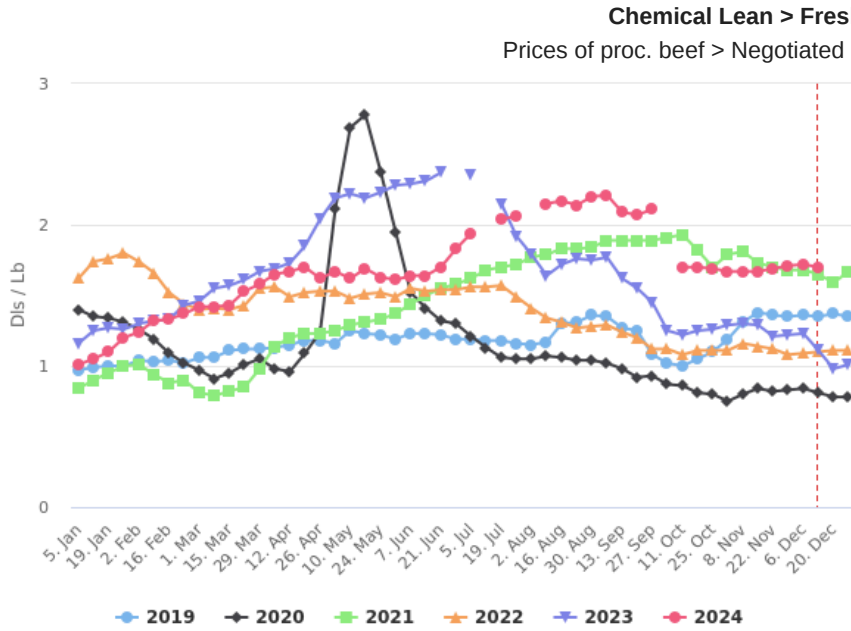
- Everything included in the Free Market Data Suite
- 6 years of historical data
- Mexican Prices in the U.S.
- Import/Export Data
- Download the data in Excel format

YOUR GATEWAY TO EFFORTLESS N.A. MEAT INDUSTRY DATA. DON'T MISS OUT ON A SEAMLESS, CUSTOMIZABLE, AND FAST ANALYTICS EXPERIENCE!

contact@emeat.io.

Copyright © 2020, EMEAT. All rights reserved

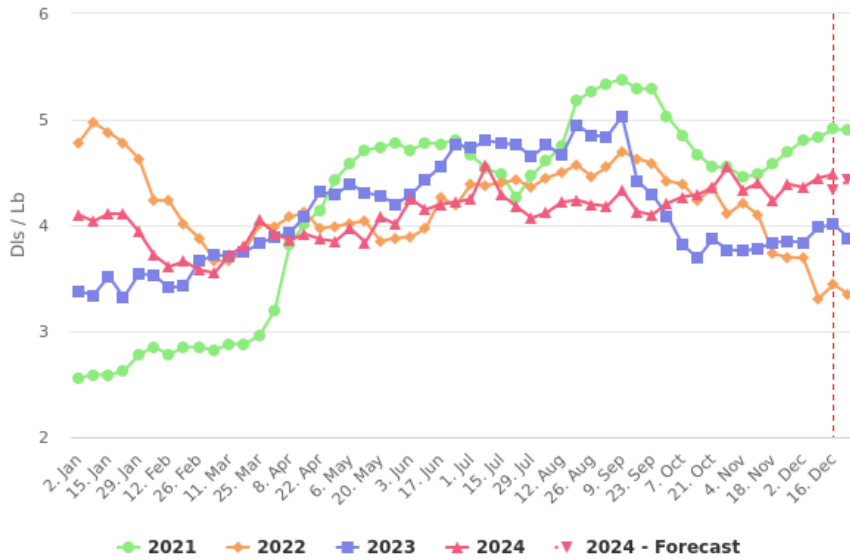
For each protein module that you have access to, the report includes several items/data series by default such as production data and the value of the Cutouts. You can add more items/data series in the EMEAT app (web or mobile) Personalization section.



For each protein module that you have access to, the report includes several items/data series by default such as production data and the value of the Cutouts. You can add more items/data series in the EMEAT app (web or mobile) Personalization section.

120 1, Deckle-off, bnls > Prime

Prices of boxed beef > Negotiated Sales 0-21 Days > Brisket

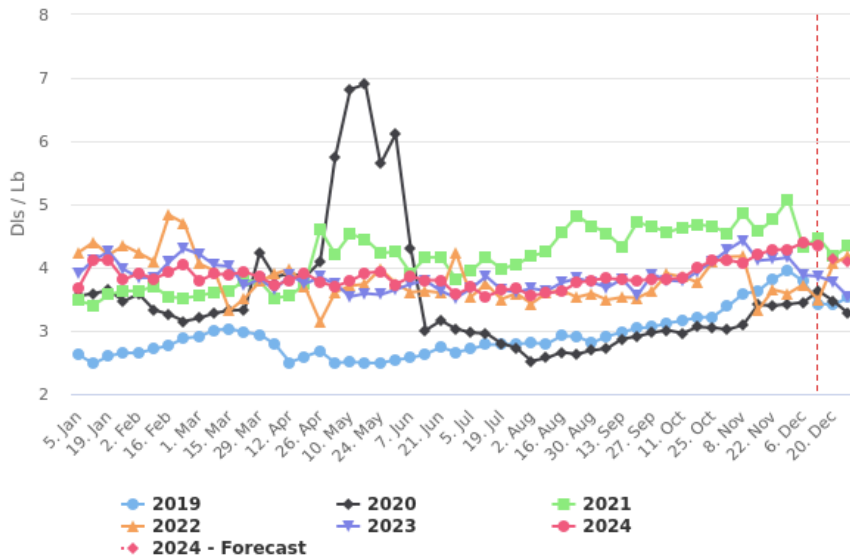


Data in USD/Lb

Years	25 Nov	02 Dec	09 Dec	16 Dec
2024	\$4.39	\$4.36	\$4.45	\$4.48
2023	\$3.85	\$3.84	\$3.98	\$4.01
2022	\$3.70	\$3.69	\$3.31	\$3.44
2021	\$4.70	\$4.80	\$4.83	\$4.91
Avg Past 3 Years	\$4.09	\$4.11	\$4.04	\$4.12

114E 3, Clod, arm roast > Choice

Prices of boxed beef > Negotiated Sales 0-21 Days > Chuck



Data in USD/Lb

Years	22 Nov	29 Nov	06 Dec	13 Dec
2024	\$4.28	\$4.29	\$4.39	\$4.35
2023	\$4.13	\$4.16	\$3.88	\$3.86
2022	\$3.65	\$3.59	\$3.73	\$3.49
2021	\$4.76	\$5.08	\$4.32	\$4.47
2020	\$3.40	\$3.42	\$3.45	\$3.63
2019	\$3.82	\$3.95	\$3.78	\$3.43
Avg Past 3 Years	\$3.95	\$4.04	\$3.83	\$3.78

THE EASY ANALYTICS SUITE

- Everything included in the Free Market Data Suite
- 6 years of historical data
- Mexican Prices in the U.S.
- Import/Export Data
- Download the data in Excel format

YOUR GATEWAY TO EFFORTLESS N.A. MEAT INDUSTRY DATA. DON'T MISS OUT ON A SEAMLESS, CUSTOMIZABLE, AND FAST ANALYTICS EXPERIENCE!

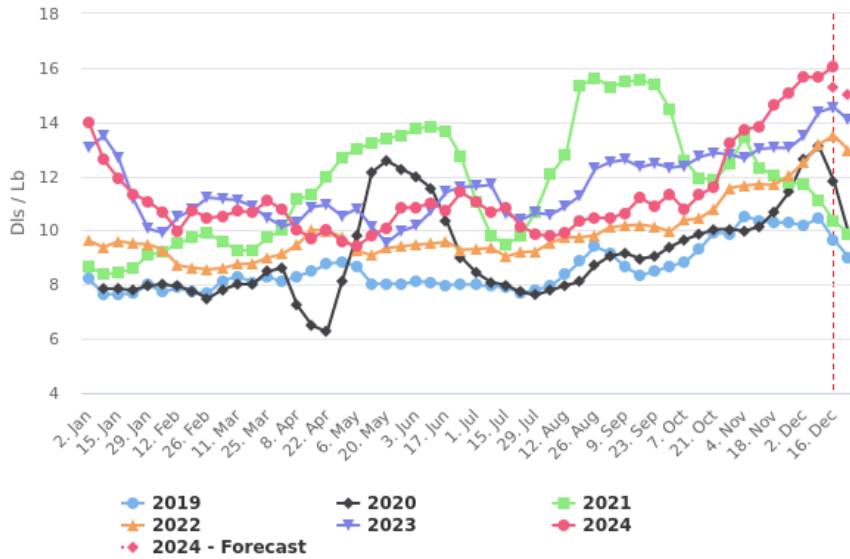
contact@emeat.io.

Copyright © 2020, EMEAT. All rights reserved

For each protein module that you have access to, the report includes several items/data series by default such as production data and the value of the Cutouts. You can add more items/data series in the EMEAT app (web or mobile) Personalization section.

112A 3, Ribeye, bnls, heavy > Choice 2/3

Prices of boxed beef > Negotiated Sales 0-21 Days > Rib

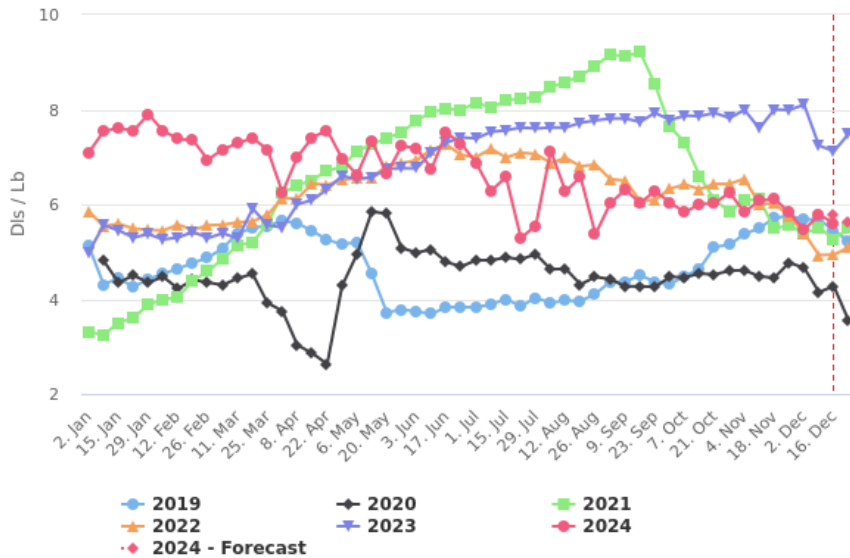


Data in USD/Lb

Years	25 Nov	02 Dec	09 Dec	16 Dec
2024	\$15.1	\$15.7	\$15.7	\$16.1
2023	\$13.0	\$13.5	\$14.4	\$14.5
2022	\$12.0	\$12.5	\$13.2	\$13.5
2021	\$11.7	\$11.7	\$11.1	\$10.4
2020	\$11.4	\$12.6	\$13.1	\$11.8
2019	\$10.3	\$10.2	\$10.5	\$9.66
Avg Past 3 Years	\$11.7	\$12.1	\$12.5	\$12.0

114F 5, Clod tender > Choice 2/3

Prices of boxed beef > Negotiated Sales 0-21 Days > Chuck



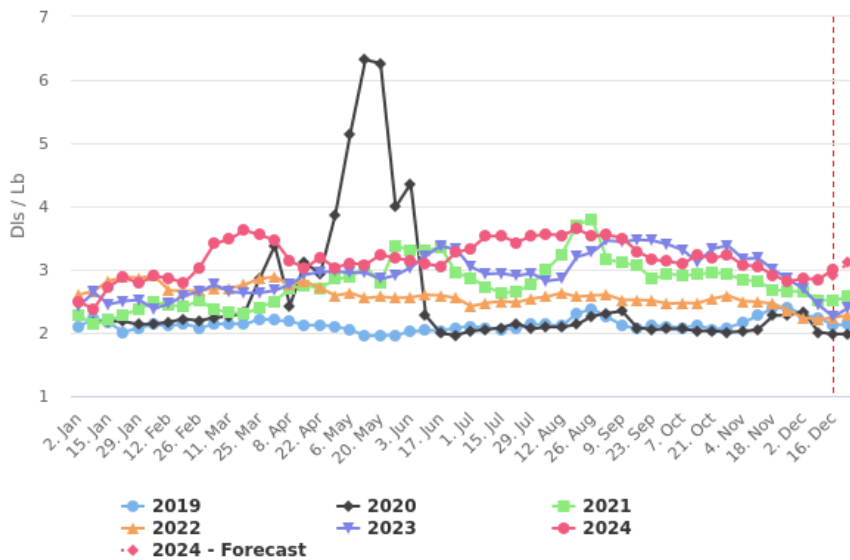
Data in USD/Lb

Years	25 Nov	02 Dec	09 Dec	16 Dec
2024	\$5.83	\$5.46	\$5.78	\$5.61
2023	\$7.99	\$8.10	\$7.24	\$7.12
2022	\$5.75	\$5.39	\$4.93	\$4.94
2021	\$5.56	\$5.38	\$5.51	\$5.27
2020	\$4.77	\$4.66	\$4.15	\$4.27
2019	\$5.76	\$5.68	\$5.68	\$5.45
Avg Past 3 Years	\$5.97	\$5.84	\$5.50	\$5.41

For each protein module that you have access to, the report includes several items/data series by default such as production data and the value of the Cutouts. You can add more items/data series in the EMEAT app (web or mobile) Personalization section.

168 1, Top inside round > Ungraded

Prices of boxed beef > Negotiated Sales 0-21 Days > Round

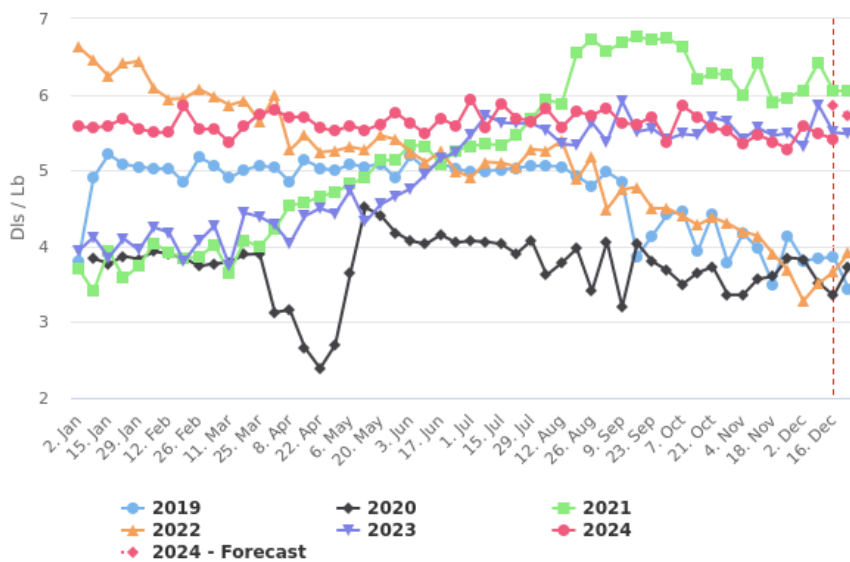


Data in USD/Lb

Years	25 Nov	02 Dec	09 Dec	16 Dec
2024	\$2.81	\$2.86	\$2.84	\$3.01
2023	\$2.85	\$2.69	\$2.44	\$2.25
2022	\$2.35	\$2.24	\$2.21	\$2.24
2021	\$2.66	\$2.65	\$2.52	\$2.51
2020	\$2.28	\$2.33	\$2.01	\$1.98
2019	\$2.40	\$2.28	\$2.24	\$2.12
Avg Past 3 Years	\$2.51	\$2.44	\$2.28	\$2.22

123A 3, Short rib > Ungraded

Prices of boxed beef > Negotiated Sales 0-21 Days > Short Plate



Data in USD/Lb

Years	25 Nov	02 Dec	09 Dec	16 Dec
2024	\$5.28	\$5.59	\$5.48	\$5.42
2023	\$5.49	\$5.31	\$5.86	\$5.50
2022	\$3.68	\$3.28	\$3.51	\$3.66
2021	\$5.96	\$6.06	\$6.42	\$6.05
2020	\$3.85	\$3.83	\$3.52	\$3.35
2019	\$4.14	\$3.81	\$3.84	\$3.86
Avg Past 3 Years	\$4.62	\$4.46	\$4.63	\$4.49

THE EASY ANALYTICS SUITE

- ✔ Everything included in the Free Market Data Suite
- ✔ 6 years of historical data
- ✔ Mexican Prices in the U.S.
- ✔ Import/Export Data
- ✔ Download the data in Excel format

YOUR GATEWAY TO EFFORTLESS N.A. MEAT INDUSTRY DATA. DON'T MISS OUT ON A SEAMLESS, CUSTOMIZABLE, AND FAST ANALYTICS EXPERIENCE!

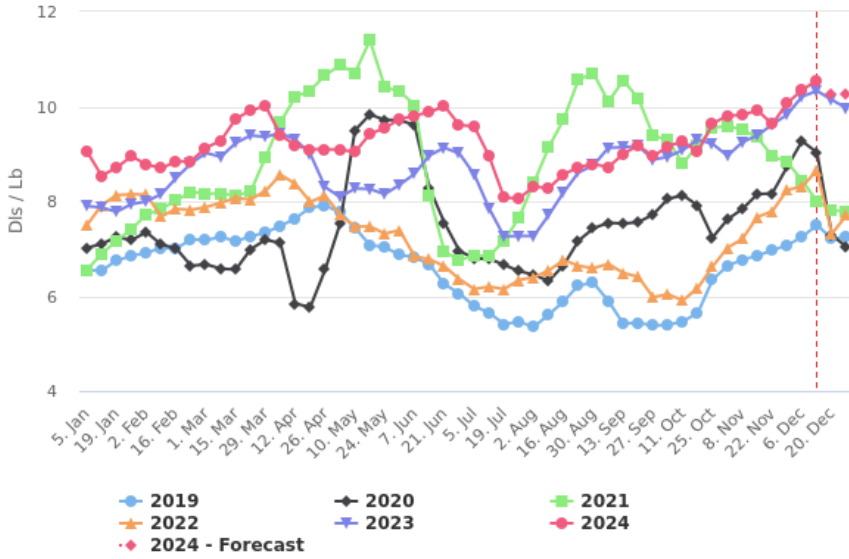
contact@emeat.io.

Copyright © 2020, EMEAT. All rights reserved

For each protein module that you have access to, the report includes several items/data series by default such as production data and the value of the Cutouts. You can add more items/data series in the **EMEAT** app (web or mobile) Personalization section.

112A 3, Ribeye, bnls, heavy > Select

Prices of boxed beef > Negotiated Sales 0-21 Days > Rib

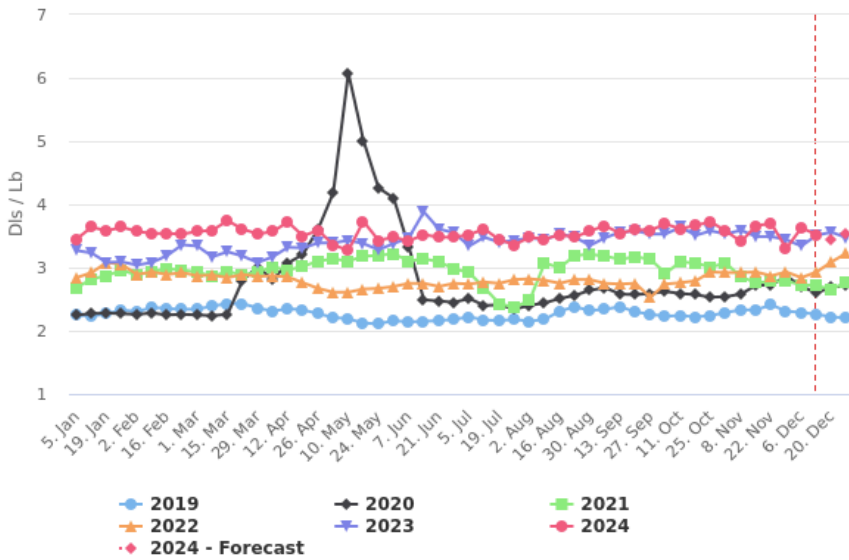


Data in USD/Lb

Years	22 Nov	29 Nov	06 Dec	13 Dec
2024	\$9.63	\$10.1	\$10.3	\$10.5
2023	\$9.62	\$9.83	\$10.2	\$10.3
2022	\$7.79	\$8.24	\$8.31	\$8.65
2021	\$8.95	\$8.83	\$8.44	\$8.00
2020	\$8.17	\$8.73	\$9.27	\$9.03
2019	\$6.97	\$7.07	\$7.25	\$7.50
Avg Past 3 Years	\$8.30	\$8.54	\$8.69	\$8.70

113C 1, Semi-bnls, neck/off > Choice

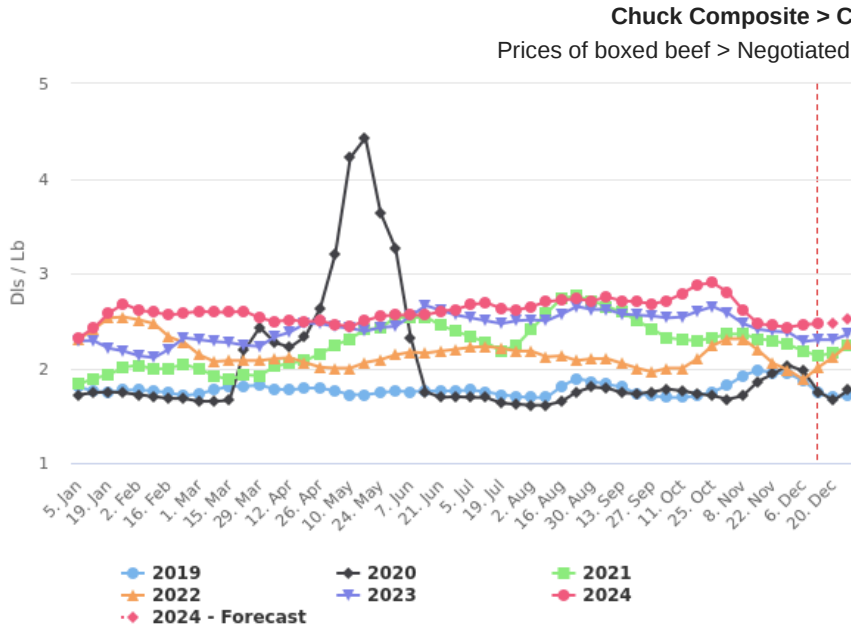
Prices of boxed beef > Negotiated Sales 0-21 Days > Chuck



Data in USD/Lb

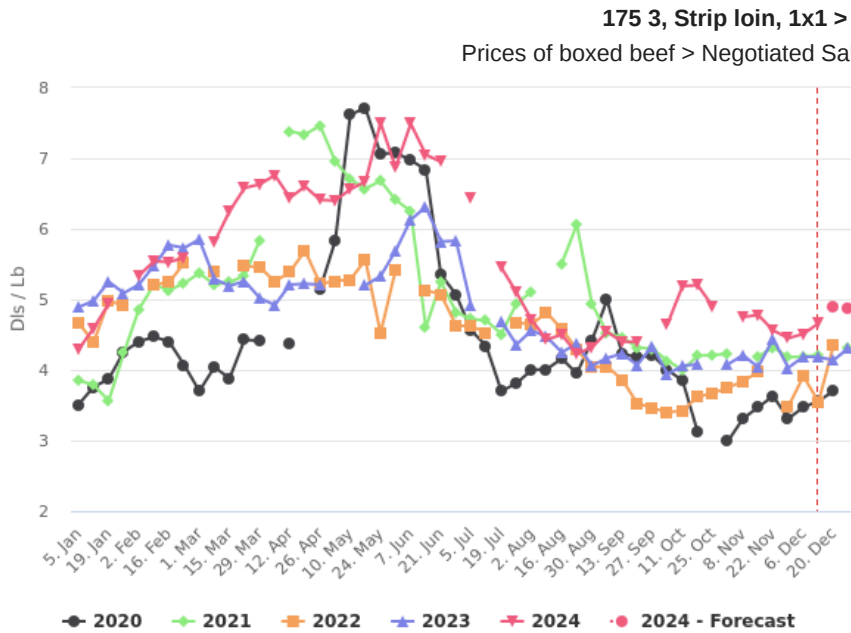
Years	22 Nov	29 Nov	06 Dec	13 Dec
2024	\$3.70	\$3.30	\$3.63	\$3.52
2023	\$3.49	\$3.44	\$3.34	\$3.51
2022	\$2.87	\$2.93	\$2.84	\$2.93
2021	\$2.78	\$2.78	\$2.73	\$2.71
2020	\$2.72	\$2.87	\$2.70	\$2.60
2019	\$2.41	\$2.31	\$2.29	\$2.26
Avg Past 3 Years	\$2.85	\$2.87	\$2.78	\$2.80

For each protein module that you have access to, the report includes several items/data series by default such as production data and the value of the Cutouts. You can add more items/data series in the **EMEAT** app (web or mobile) Personalization section.



Data in USD/Lb

Years	22 Nov	29 Nov	06 Dec	13 Dec
2024	\$2.45	\$2.43	\$2.46	\$2.47
2023	\$2.39	\$2.38	\$2.28	\$2.30
2022	\$2.05	\$1.98	\$1.88	\$2.01
2021	\$2.29	\$2.25	\$2.18	\$2.13
2020	\$1.94	\$2.03	\$1.97	\$1.75
2019	\$1.95	\$1.94	\$1.87	\$1.74
Avg Past 3 Years	\$2.12	\$2.12	\$2.04	\$1.99



Data in USD/Lb

Years	22 Nov	29 Nov	06 Dec	13 Dec
2024	\$4.56	\$4.45	\$4.51	\$4.66
2023	\$4.44	\$4.03	\$4.19	\$4.18
2022	--	\$3.48	\$3.91	\$3.55
2021	\$4.32	\$4.18	\$4.19	\$4.21
2020	\$3.63	\$3.31	\$3.47	\$3.56
Avg Past 3 Years	\$4.13	\$3.75	\$3.94	\$3.87

THE EASY ANALYTICS SUITE

- Everything included in the Free Market Data Suite
- 6 years of historical data
- Mexican Prices in the U.S.
- Import/Export Data
- Download the data in Excel format

YOUR GATEWAY TO EFFORTLESS N.A. MEAT INDUSTRY DATA. DON'T MISS OUT ON A SEAMLESS, CUSTOMIZABLE, AND FAST ANALYTICS EXPERIENCE!

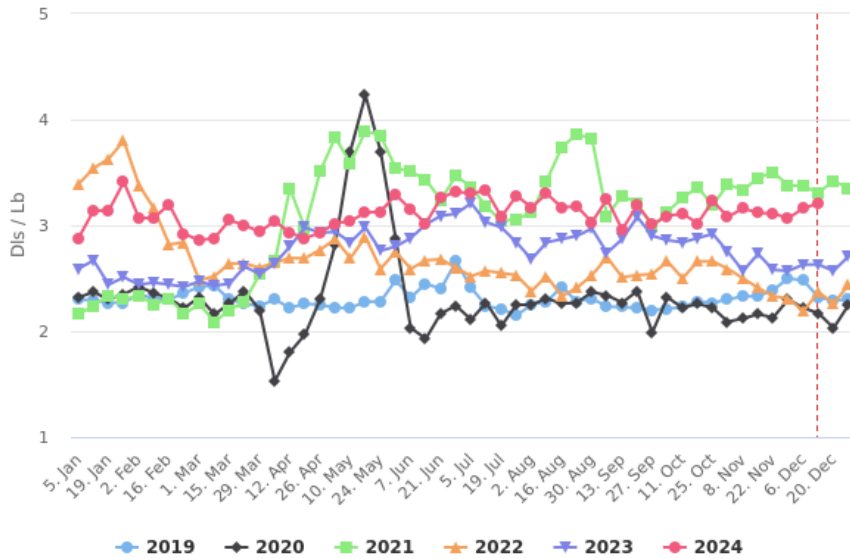
contact@emeat.io

Copyright © 2020, EMEAT. All rights reserved

For each protein module that you have access to, the report includes several items/data series by default such as production data and the value of the Cutouts. You can add more items/data series in the EMEAT app (web or mobile) Personalization section.

Chuck > 120, Brisket

Prices of boxed cow beef > Negotiated Sales 0-21 Days

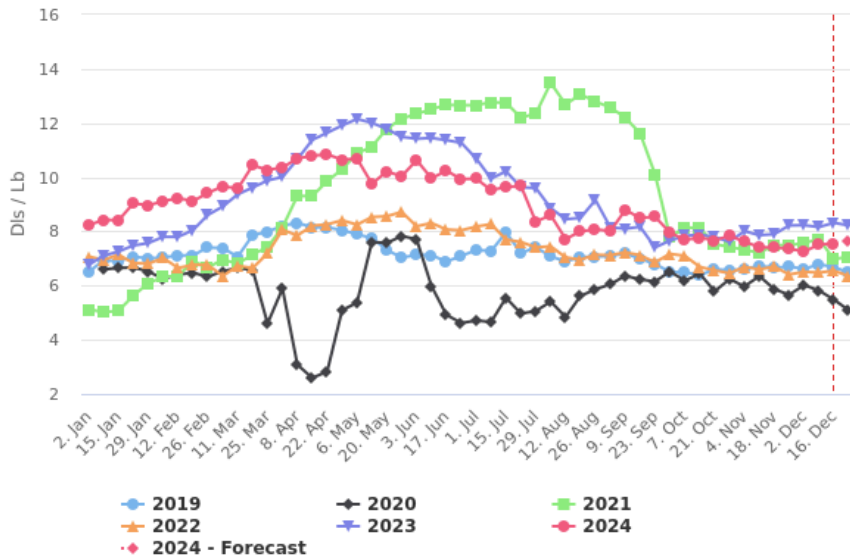


Data in USD/Lb

Years	22 Nov	29 Nov	06 Dec	13 Dec
2024	\$3.11	\$3.07	\$3.16	\$3.21
2023	\$2.58	\$2.57	\$2.63	\$2.63
2022	\$2.33	\$2.31	\$2.19	\$2.37
2021	\$3.50	\$3.38	\$3.37	\$3.31
2020	\$2.13	\$2.30	\$2.22	\$2.17
2019	\$2.39	\$2.50	\$2.48	\$2.32
Avg Past 3 Years	\$2.59	\$2.61	\$2.58	\$2.56

121C 4, Outside skirt > Choice 2/3

Prices of boxed beef > Negotiated Sales 0-21 Days > Plate

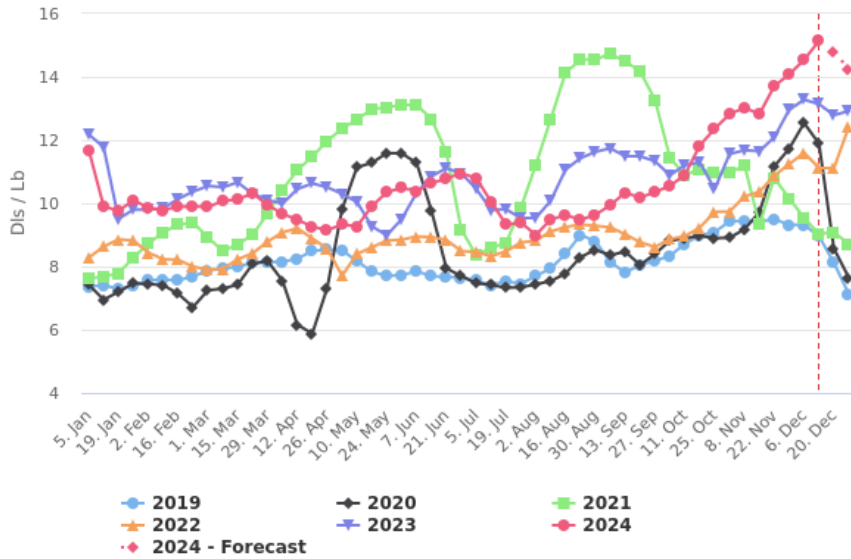


Data in USD/Lb

Years	25 Nov	02 Dec	09 Dec	16 Dec
2024	\$7.37	\$7.25	\$7.52	\$7.54
2023	\$8.22	\$8.23	\$8.16	\$8.32
2022	\$6.41	\$6.51	\$6.48	\$6.55
2021	\$7.49	\$7.57	\$7.71	\$6.98
2020	\$5.66	\$6.02	\$5.82	\$5.48
2019	\$6.71	\$6.61	\$6.79	\$6.68
Avg Past 3 Years	\$6.90	\$6.99	\$6.99	\$6.80

For each protein module that you have access to, the report includes several items/data series by default such as production data and the value of the Cutouts. You can add more items/data series in the **EMEAT** app (web or mobile) Personalization section.

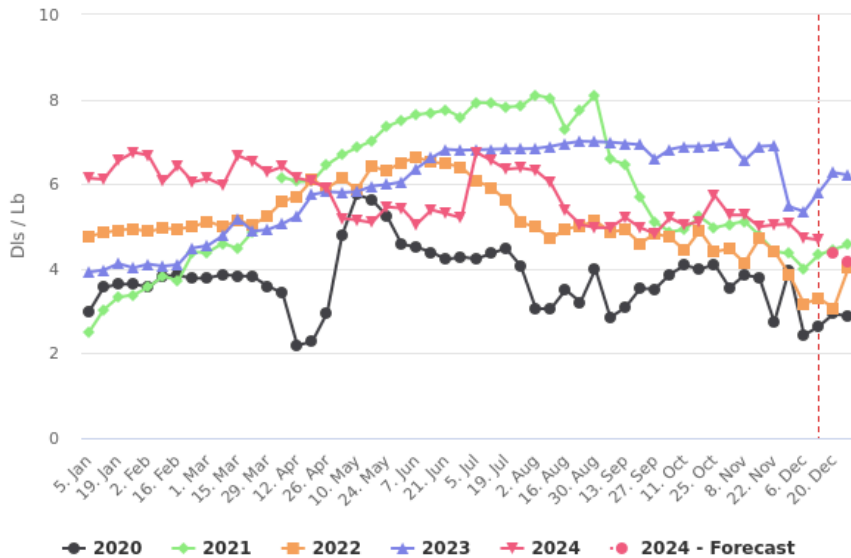
112A 3, Ribeye, bnls, heavy > Choice
 Prices of boxed beef > Negotiated Sales 0-21 Days > Rib



Data in USD/Lb

Years	22 Nov	29 Nov	06 Dec	13 Dec
2024	\$13.7	\$14.1	\$14.5	\$15.1
2023	\$12.1	\$13.0	\$13.3	\$13.1
2022	\$10.9	\$11.2	\$11.6	\$11.1
2021	\$10.8	\$10.2	\$9.54	\$9.03
2020	\$11.2	\$11.7	\$12.5	\$11.9
2019	\$9.50	\$9.32	\$9.32	\$8.96
Avg Past 3 Years	\$10.9	\$11.1	\$11.3	\$10.8

114F 5, Clod tender > Select
 Prices of boxed beef > Negotiated Sales 0-21 Days > Chuck



Data in USD/Lb

Years	22 Nov	29 Nov	06 Dec	13 Dec
2024	\$5.04	\$5.06	\$4.73	\$4.68
2023	\$6.91	\$5.47	\$5.35	\$5.81
2022	\$4.42	\$3.87	\$3.17	\$3.30
2021	\$4.41	\$4.36	\$4.00	\$4.33
2020	\$2.74	\$3.97	\$2.43	\$2.64
Avg Past 3 Years	\$4.62	\$4.42	\$3.74	\$4.02

THE EASY ANALYTICS SUITE

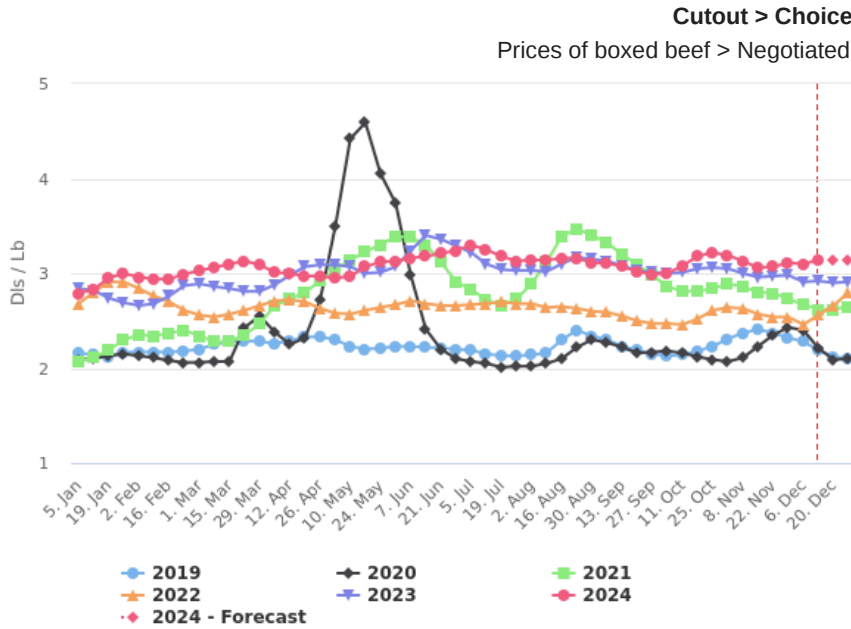
- Everything included in the Free Market Data Suite
- 6 years of historical data
- Mexican Prices in the U.S.
- Import/Export Data
- Download the data in Excel format

YOUR GATEWAY TO EFFORTLESS N.A. MEAT INDUSTRY DATA. DON'T MISS OUT ON A SEAMLESS, CUSTOMIZABLE, AND FAST ANALYTICS EXPERIENCE!

contact@emeat.io

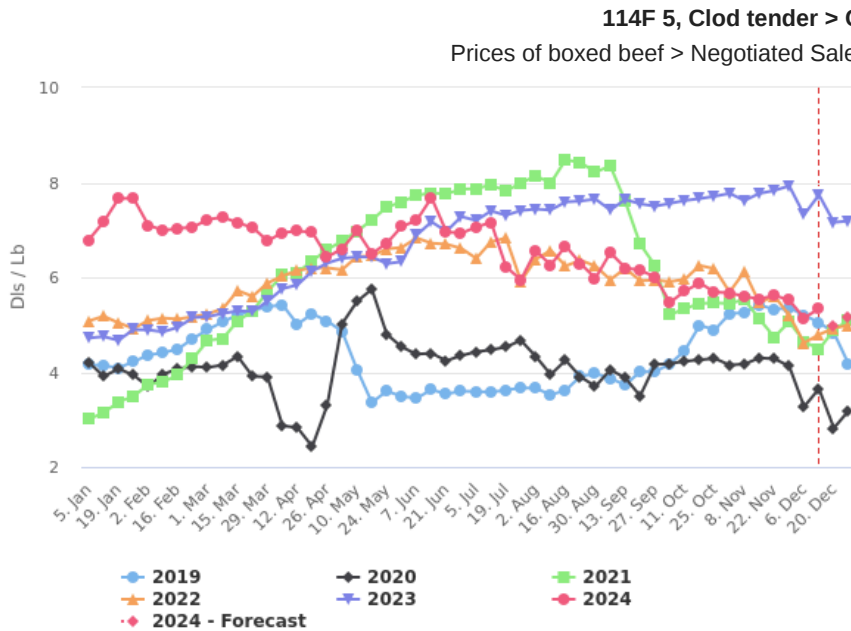
Copyright © 2020, EMEAT. All rights reserved

For each protein module that you have access to, the report includes several items/data series by default such as production data and the value of the Cutouts. You can add more items/data series in the **EMEAT** app (web or mobile) Personalization section.



Data in USD/Lb

Years	22 Nov	29 Nov	06 Dec	13 Dec
2024	\$3.07	\$3.11	\$3.10	\$3.14
2023	\$2.97	\$2.98	\$2.91	\$2.92
2022	\$2.54	\$2.54	\$2.46	\$2.56
2021	\$2.79	\$2.73	\$2.67	\$2.62
2020	\$2.35	\$2.43	\$2.40	\$2.21
2019	\$2.37	\$2.32	\$2.28	\$2.19
Avg Past 3 Years	\$2.60	\$2.60	\$2.55	\$2.50



Data in USD/Lb

Years	22 Nov	29 Nov	06 Dec	13 Dec
2024	\$5.62	\$5.52	\$5.14	\$5.34
2023	\$7.83	\$7.93	\$7.32	\$7.74
2022	\$5.61	\$5.20	\$4.62	\$4.79
2021	\$4.74	\$5.06	\$4.65	\$4.48
2020	\$4.28	\$4.13	\$3.27	\$3.65
2019	\$5.32	\$5.36	\$5.20	\$5.05
Avg Past 3 Years	\$5.56	\$5.54	\$5.01	\$5.14

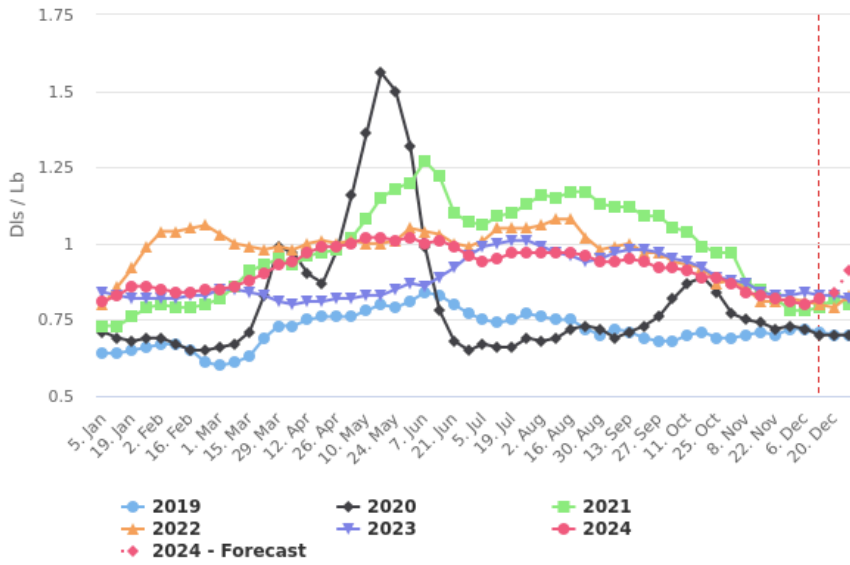
For each protein module that you have access to, the report includes several items/data series by default such as production data and the value of the Cutouts. You can add more items/data series in the **EMEAT** app (web or mobile) Personalization section.



PRICES OF MEAT CUTS / SUB-PRIMALS

Loin Composite

Price of pork cuts & other > Negotiated Sales 0-14 Days > FOB Plant

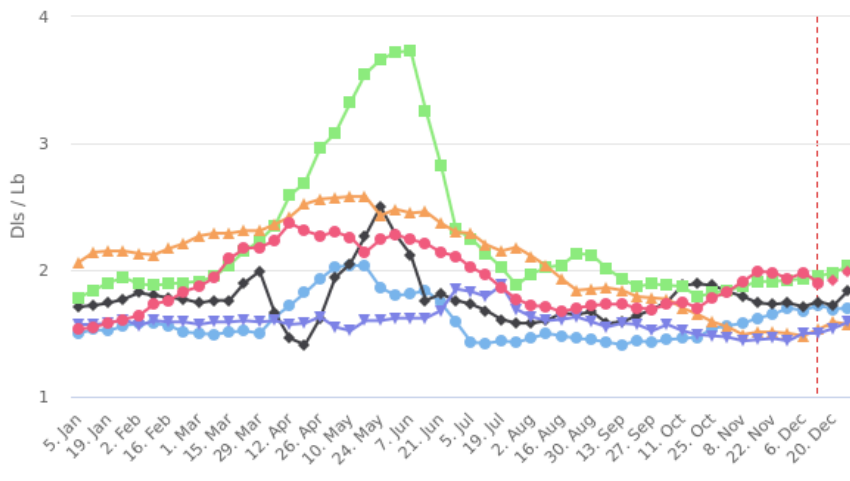


Data in USD/Lb

Years	22 Nov	29 Nov	06 Dec	13 Dec
2024	\$0.82	\$0.81	\$0.80	\$0.82
2023	\$0.83	\$0.83	\$0.84	\$0.83
2022	\$0.81	\$0.82	\$0.81	\$0.80
2021	\$0.82	\$0.78	\$0.78	\$0.79
2020	\$0.72	\$0.73	\$0.72	\$0.70
2019	\$0.70	\$0.72	\$0.72	\$0.71
Avg Past 3 Years	\$0.78	\$0.78	\$0.78	\$0.77

Sparerib > BBQ Style Spareribs, VAC

Price of pork cuts & other > Negotiated Sales 0-14 Days > null



Data in USD/Lb

Years	22 Nov	29 Nov	06 Dec	13 Dec
2024	\$1.98	\$1.93	\$1.98	\$1.90
2023	\$1.46	\$1.44	\$1.50	\$1.50
2022	\$1.51	\$1.50	\$1.48	\$1.53
2021	\$1.91	\$1.92	\$1.93	\$1.95
2020	\$1.73	\$1.74	\$1.71	\$1.75
2019	\$1.65	\$1.70	\$1.68	\$1.72
Avg Past 3 Years				

THE EASY ANALYTICS SUITE

- Everything included in the Free Market Data Suite
- 6 years of historical data
- Mexican Prices in the U.S.
- Import/Export Data
- Download the data in Excel format

YOUR GATEWAY TO EFFORTLESS N.A. MEAT INDUSTRY DATA. DON'T MISS OUT ON A SEAMLESS, CUSTOMIZABLE, AND FAST ANALYTICS EXPERIENCE!

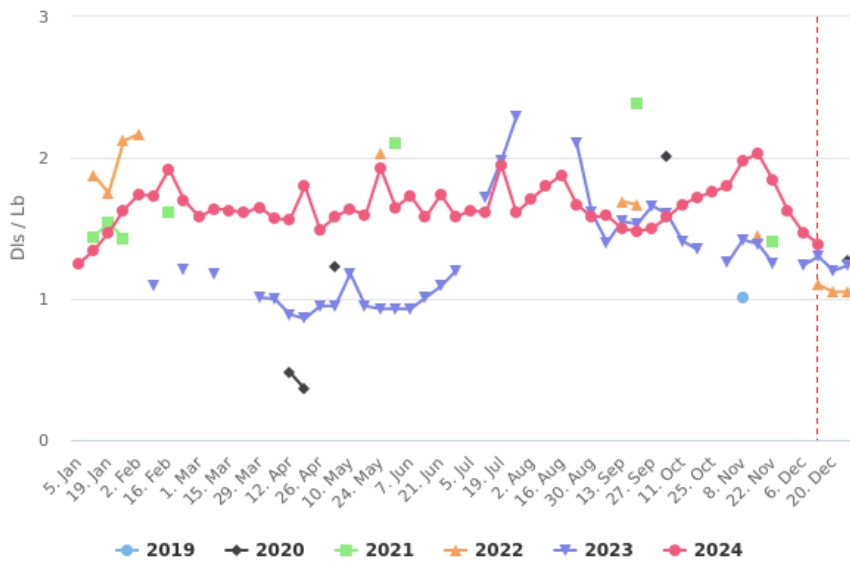
contact@emeat.io

Copyright © 2020, EMEAT. All rights reserved

For each protein module that you have access to, the report includes several items/data series by default such as production data and the value of the Cutouts. You can add more items/data series in the EMEAT app (web or mobile) Personalization section.

Belly > Skin-on Belly 10-12#

Price of pork cuts & other > Negotiated Sales 0-14 Days > FOB Plant

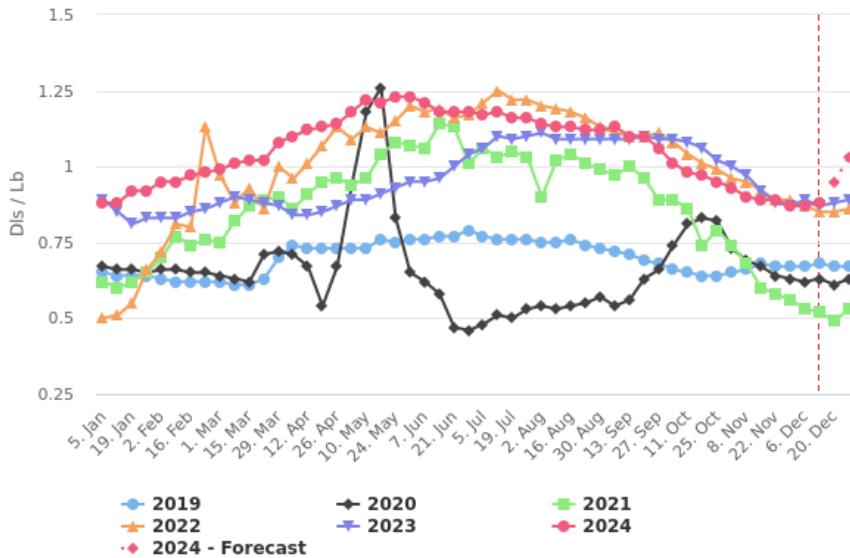


Data in USD/Lb

Years	22 Nov	29 Nov	06 Dec	13 Dec
2024	\$1.84	\$1.62	\$1.47	\$1.39
2023	\$1.25	--	\$1.24	\$1.30
2022	--	--	--	\$1.10
2021	\$1.41	--	--	--
2020	--	--	--	--
2019	--	--	--	--
Avg Past 3 Years	\$1.33	\$NaN	\$1.24	\$1.20

Loin > 1/4 Trimmed Loin Combo

Price of pork cuts & other > Negotiated Sales 0-14 Days > undefined



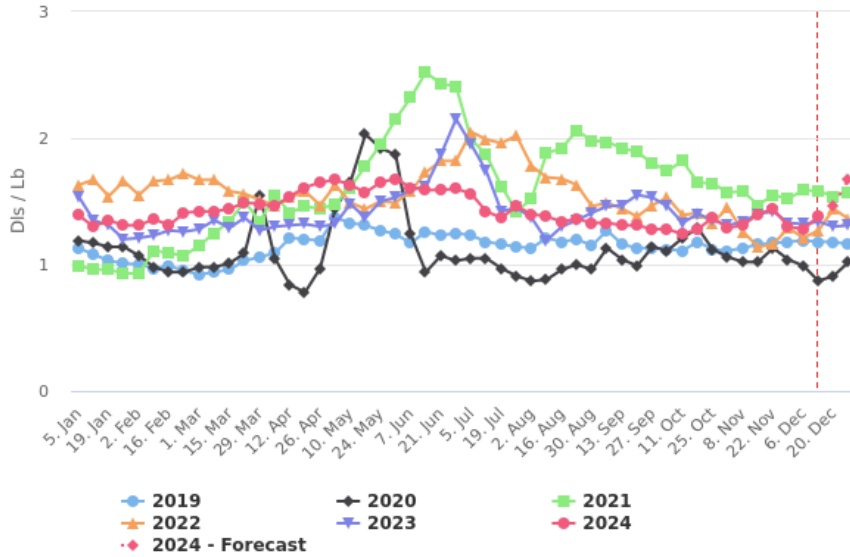
Data in USD/Lb

Years	22 Nov	29 Nov	06 Dec	13 Dec
2024	\$0.89	\$0.87	\$0.87	\$0.88
2023	\$0.88	\$0.87	\$0.89	\$0.87
2022	\$0.89	\$0.89	\$0.87	\$0.85
2021	\$0.58	\$0.56	\$0.53	\$0.52
2020	\$0.64	\$0.63	\$0.62	\$0.63
2019	\$0.67	\$0.67	\$0.67	\$0.68
Avg Past 3 Years	\$0.73	\$0.72	\$0.72	\$0.71

For each protein module that you have access to, the report includes several items/data series by default such as production data and the value of the Cutouts. You can add more items/data series in the **EMEAT** app (web or mobile) Personalization section.

Butt > 1/4 Trim Bnls Butt Combo

Price of pork cuts & other > Negotiated Sales 0-14 Days > FOB Plant

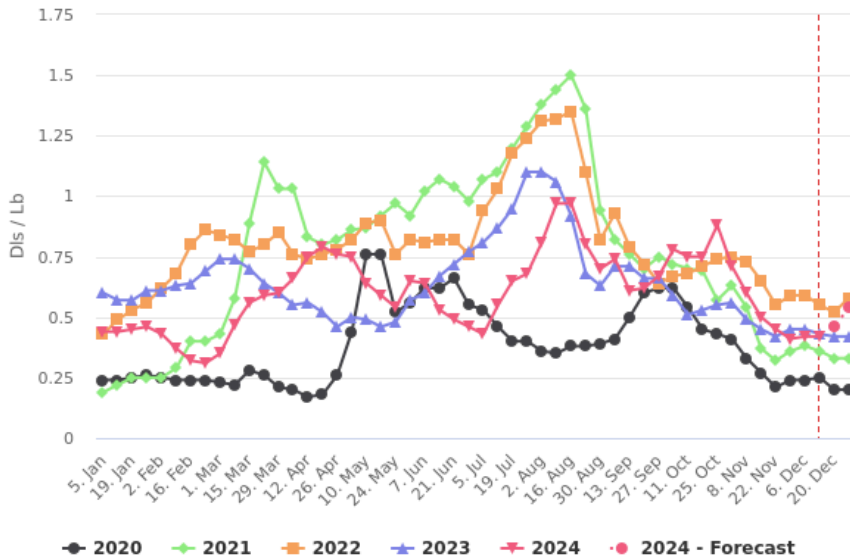


Data in USD/Lb

Years	22 Nov	29 Nov	06 Dec	13 Dec
2024	\$1.44	\$1.30	\$1.28	\$1.38
2023	\$1.42	\$1.33	\$1.32	\$1.34
2022	\$1.16	\$1.29	\$1.21	\$1.27
2021	\$1.55	\$1.52	\$1.59	\$1.58
2020	\$1.13	\$1.04	\$0.99	\$0.87
2019	\$1.17	\$1.18	\$1.19	\$1.18
Avg Past 3 Years	\$1.29	\$1.27	\$1.26	\$1.25

Trim > 42% Trim Combo

Price of pork cuts & other > Negotiated Sales 0-14 Days > undefined



Data in USD/Lb

Years	22 Nov	29 Nov	06 Dec	13 Dec
2024	\$0.45	\$0.41	\$0.42	\$0.42
2023	\$0.42	\$0.45	\$0.45	\$0.43
2022	\$0.55	\$0.59	\$0.59	\$0.55
2021	\$0.32	\$0.36	\$0.38	\$0.36
2020	\$0.21	\$0.24	\$0.24	\$0.25
Avg Past 3 Years	\$0.38	\$0.41	\$0.41	\$0.40

THE EASY ANALYTICS SUITE

- ✔ Everything included in the Free Market Data Suite
- ✔ 6 years of historical data
- ✔ Mexican Prices in the U.S.
- ✔ Import/Export Data
- ✔ Download the data in Excel format

YOUR GATEWAY TO EFFORTLESS N.A. MEAT INDUSTRY DATA. DON'T MISS OUT ON A SEAMLESS, CUSTOMIZABLE, AND FAST ANALYTICS EXPERIENCE!

contact@emeat.io.

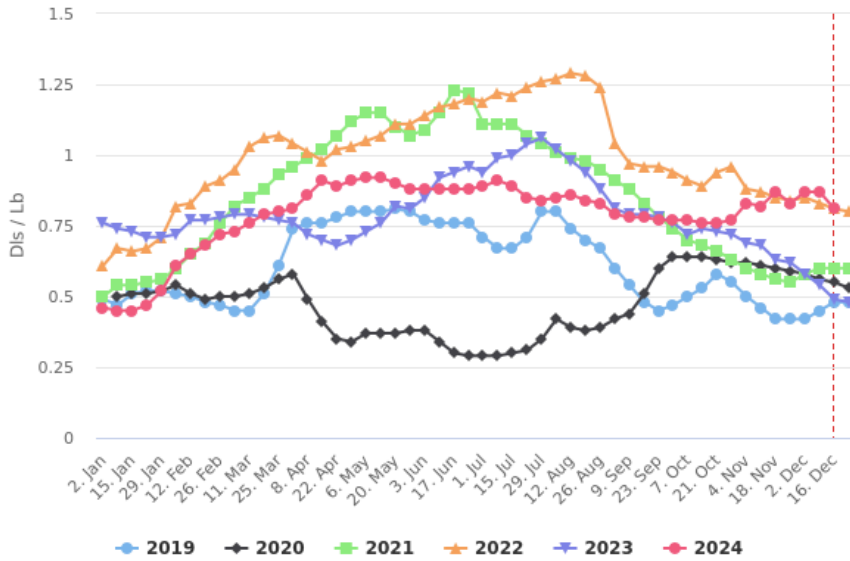
Copyright © 2020, EMEAT. All rights reserved

For each protein module that you have access to, the report includes several items/data series by default such as production data and the value of the Cutouts. You can add more items/data series in the EMEAT app (web or mobile) Personalization section.



PRICES OF SWINE

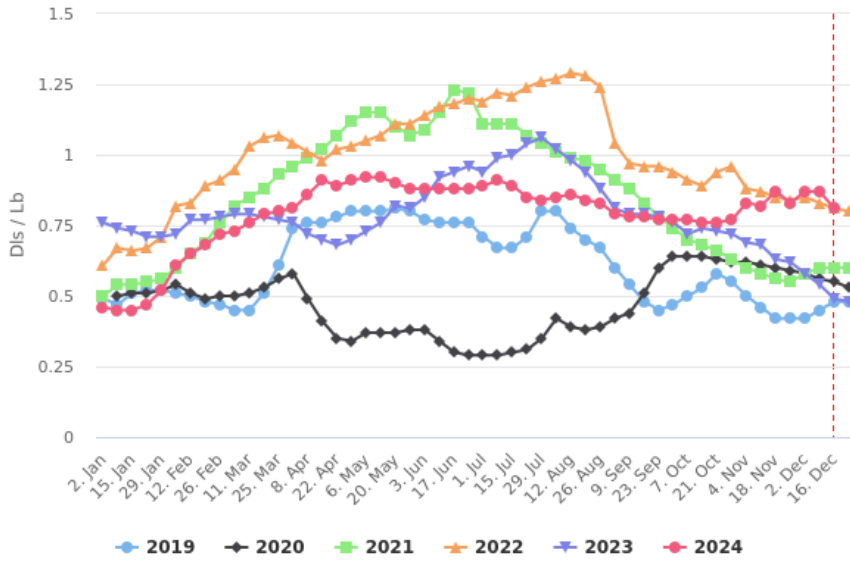
Negotiated (Carcass) > National



Data in USD/Lb

Years	25 Nov	02 Dec	09 Dec	16 Dec
2024	\$0.83	\$0.87	\$0.87	\$0.81
2023	\$0.62	\$0.58	\$0.54	\$0.49
2022	\$0.84	\$0.85	\$0.83	\$0.81
2021	\$0.55	\$0.58	\$0.60	\$0.60
2020	\$0.59	\$0.58	\$0.56	\$0.55
2019	\$0.42	\$0.42	\$0.45	\$0.48
Avg Past 3 Years	\$0.61	\$0.60	\$0.60	\$0.58

Negotiated (Carcass) > National

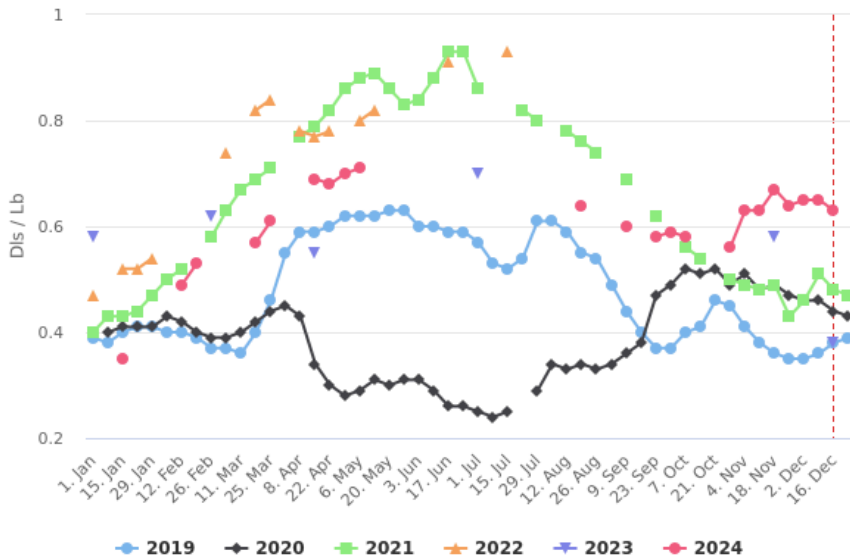


Data in USD/Lb

Years	25 Nov	02 Dec	09 Dec	16 Dec
2024	\$0.83	\$0.87	\$0.87	\$0.81
2023	\$0.62	\$0.58	\$0.54	\$0.49
2022	\$0.84	\$0.85	\$0.83	\$0.81
2021	\$0.55	\$0.58	\$0.60	\$0.60
2020	\$0.59	\$0.58	\$0.56	\$0.55
2019	\$0.42	\$0.42	\$0.45	\$0.48
Avg Past 3 Years	\$0.61	\$0.60	\$0.60	\$0.58

For each protein module that you have access to, the report includes several items/data series by default such as production data and the value of the Cutouts. You can add more items/data series in the **EMEAT** app (web or mobile) Personalization section.

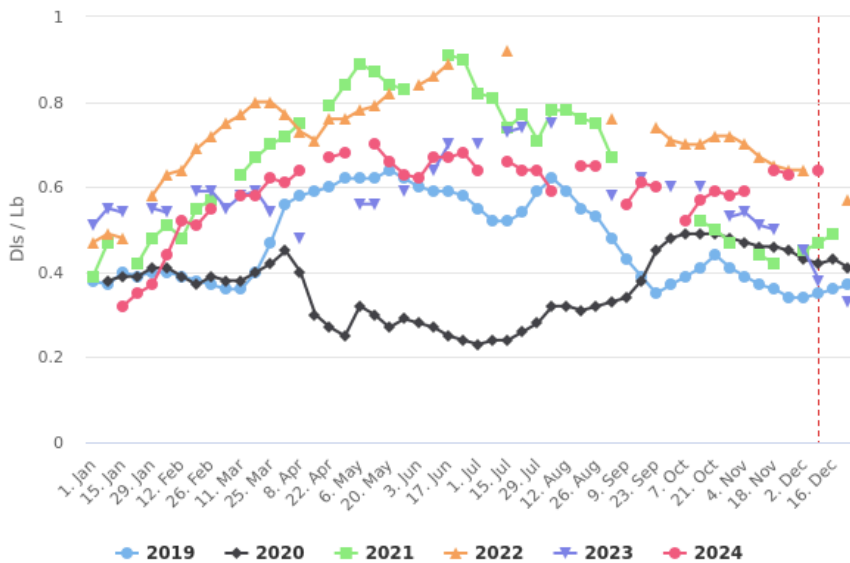
Negotiated (Live) > Eastern Cornbelt



Data in USD/Lb

Years	25 Nov	02 Dec	09 Dec	16 Dec
2024	\$0.64	\$0.65	\$0.65	\$0.63
2023	--	--	--	\$0.38
2022	--	--	--	--
2021	\$0.43	\$0.46	\$0.51	\$0.48
2020	\$0.47	\$0.46	\$0.46	\$0.44
2019	\$0.35	\$0.35	\$0.36	\$0.38
Avg Past 3 Years	\$0.42	\$0.42	\$0.44	\$0.42

Negotiated (Live) > Western Cornbelt



Data in USD/Lb

Years	18 Nov	25 Nov	02 Dec	09 Dec
2024	\$0.64	\$0.63	--	\$0.64
2023	\$0.50	--	\$0.45	\$0.38
2022	\$0.65	\$0.64	\$0.64	--
2021	\$0.42	--	\$0.45	\$0.47
2020	\$0.46	\$0.45	\$0.43	\$0.42
2019	\$0.36	\$0.34	\$0.34	\$0.35
Avg Past 3 Years	\$0.48	\$0.48	\$0.46	\$0.41

THE EASY ANALYTICS SUITE

- Everything included in the Free Market Data Suite
- 6 years of historical data
- Mexican Prices in the U.S.
- Import/Export Data
- Download the data in Excel format

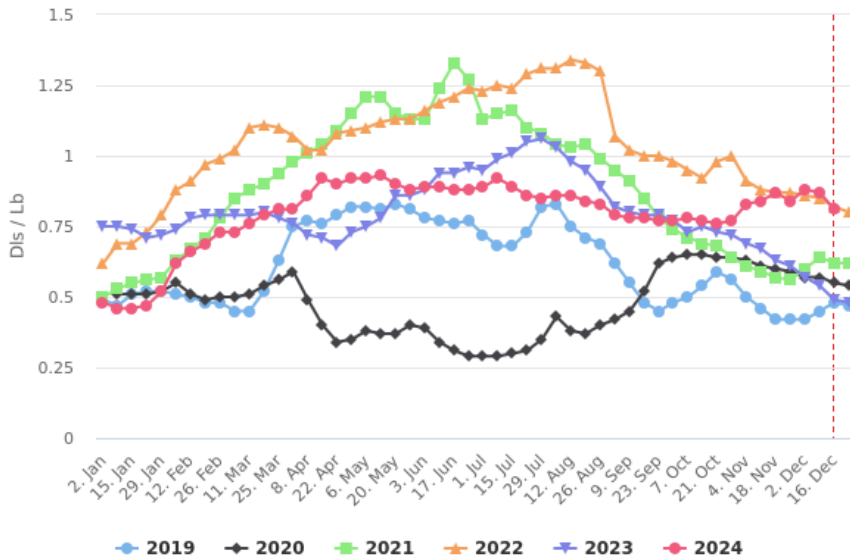
YOUR GATEWAY TO EFFORTLESS N.A. MEAT INDUSTRY DATA. DON'T MISS OUT ON A SEAMLESS, CUSTOMIZABLE, AND FAST ANALYTICS EXPERIENCE!

contact@emeat.io.

Copyright © 2020, EMEAT. All rights reserved

For each protein module that you have access to, the report includes several items/data series by default such as production data and the value of the Cutouts. You can add more items/data series in the EMEAT app (web or mobile) Personalization section.

Negotiated (Carcass) > IA/MN



Data in USD/Lb

Years	25 Nov	02 Dec	09 Dec	16 Dec
2024	\$0.84	\$0.88	\$0.87	\$0.81
2023	\$0.61	\$0.57	\$0.54	\$0.49
2022	\$0.87	\$0.86	\$0.85	\$0.82
2021	\$0.56	\$0.60	\$0.64	\$0.62
2020	\$0.59	\$0.57	\$0.57	\$0.55
2019	\$0.42	\$0.42	\$0.45	\$0.48
Avg Past 3 Years	\$0.61	\$0.61	\$0.61	\$0.59